



Republic of the Marshall Islands: COVID19

Situation Report No. 17 (as of
29 August 2022)

Background

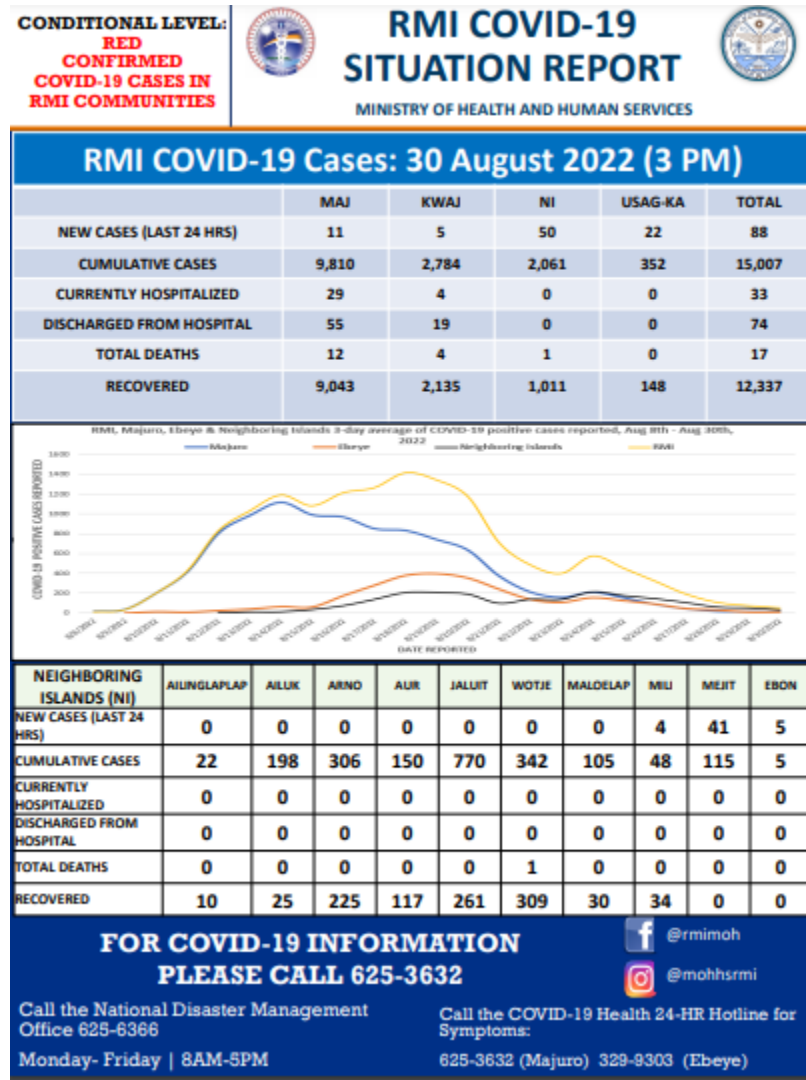
- The Republic of the Marshall Islands is made up of 1,200 islands, islets and atolls with a land area of 180 square kilometers. These islands and atoll are scatter across an area of nearly 1 million square miles in the Central Pacific. The 2 main hospitals are located in Majuro Atoll and Kwajalein Atoll with remote health dispensaries situated in all inhabited islands and atolls.
- On 31st December 2019, the WHO China Country Office was informed of cases of pneumonia unknown etiology (unknown cause) detected in Wuhan City, Hubei Province of China. From 31st December 2019 through 3rd January 2020, a total of 44 case-patients with pneumonia of unknown etiology were reported to WHO by the national authorities in China. During this reported period, the causal agent was not identified.[1] By 4th January 2020, reports indicated that the disease was confirmed as a novel coronavirus, named COVID-19.
- His Excellency President David Kabua declared a State of Health Emergency for COVID19 on 7th February 2020
- Preparedness and Response efforts are coordinated through the National Disaster Committee. The activation of the National Emergency Operation Center has initiated the RMI's Cluster system with activities focusing on health sector improvements, COVID19 economic impact, vulnerability assessments, and developing plans that focus on preparing the remote neighboring islands and atolls for COVID19.
- International Travel into the Republic of the Marshall Islands has been temporarily banned and COVID 19 measures are in place with all incoming mail parcels, supplies and equipment being decontaminated before being released.
- An RMI National COVID19 Pandemic Preparedness and Response plan has been developed and endorsed by the Cabinet.
- His Excellency President David Kabua declared a State of Health Disaster for COVID-19 on 12th August 2022.



Map Sources: UNCS, Gov't. of U.S.A.
The boundaries and names shown and the designations used on this map do not imply official endorsement or acceptance by the United Nations. Map created Jun 2010 - www.rimweb.net

Highlights:

- As of 31 August 2022, RMI discovered community transmission of COVID19. Latest COVID-19 Dashboard below:



- Public urged to continue work and business as usual but with practice of Covid safe measures (mask-on, sanitizing, proper cough and sneezing etiquette and physical distancing)
- National Disaster Committee meets on a daily basis to discuss and resolve issue pertaining to the COVID-19 virus response in the RMI. NDC meetings include Ministry of Health and Human Service updates from Secretary Jack Neidenthal and advice from MOHHS medical staff.
- Travel restriction are still in place with Travel Advisory #42 in effect until 30 September 2022
- Travelers must register and be approved to enter the RMI. Registration links are posted every month with an announcement a week before the link is posted. Up to 100 people will be granted entry into the RMI with every registration. Protocols to enter the RMI include:

Prerequisites (pre-travel) to RMI

- Fully vaccinated against Covid-19: Primary series and boosted as eligible.
- Mask wearing enroute and practicing good hand hygiene.

Upon Arrival in the RMI

- Testing on Arrival in RMI
- Rapid antigen test (Ag-RDT): Treatment as appropriate.
- Five days home quarantine/isolation. If negative rapid antigen test on arrival, can move around in public but must wear a mask.
- Anyone that initially tests negative on arrival and later develop symptoms consistent with COVID-19, should report to a health facility for COVID-19 testing and access to therapeutics (if eligible).
- Compliance with masking and other public mandates.

Ministry of Health and Human Services Updates:

- Aside from the COVID-19 outbreaks in Majuro Atoll and Kwajalein, there are confirmed cases in 10 Neighboring Islands: Wotje, Aur, Jaluit, Mili, Ailinglaplap, Arno, Maloelap, Ailuk, Wotje, Mejit, and Ebon.
 - MOHHS has deployed highly trained Marshall Islands Medical Assistance Teams (MIMAT) to Wotje, Jaluit, Arno, Ailuk, Aur, and Mejit.
 - MIMAT teams traveled 25 August 2022 to Mili, Ailinglaplap and Maloelap Atolls.
 - Additional supplies are being send to Aur and Jaluit.
 - August 30th 2022 MIMAT teams will be deployed to Ebon and Namdrik.
- The RMI received 8000 more doses of PaxLovid on Tuesday 23 August 2022 from the US government (this is the drug is given to those who are immunocompromised and who are having severe symptoms of Covid-19)
 - MOHHS will be sending out supplies of Paxlovid to the neighboring islands in the coming days.
- Covid deaths total for the RMI remains at 16 deaths:
 - 17 deaths in the RMI have been dead upon arrival (DOAs)
 - About 85% of the deceased are people who were either unvaccinated or only partially vaccinated, the age ranges are from 23 to 90 both male and female
- Public Health Door-to-door to assessment and find and locate high risk patients on Majuro has been completed and logged.
- ALTERNATIVE CARE SITE (ACS) REPORT ON MAJURO : As cases drop dramatically here in Majuro, the hours of some of these sites may change or will close starting this week. For now the schedules are as follows for this week including Friday):
 - *MIHS: Will be open all this from week 3-6 PM. Last day will be this coming Friday, the site will be taken down next Saturday.
 - *DES: This site will be permanently closed and taken down tomorrow, Monday.
 - *Tennis Courts by the Hospital: Will be open all this from week 5-8 PM. This site may stay open the following week.
 - *Laura Clinic: Will be open all this from week 3-6 PM. This site may stay open the following week.
 - *Long Island Elementary School: Will be open all this week from 4-8 PM. Last day will be this coming Friday, the site will be taken down next Saturday.
 - *Ajeltake: This site will be permanently closed and taken down tomorrow, Monday.
 - *Woja: This site will be permanently closed and taken down tomorrow, Monday.
- Schools have been close since the outbreak of COVID-19 in RMI on August 8th 2022. The MOHHS will be reassessing the possibility of opening schools at the end of next week, September 5 2022, along with Public School System officials, before presenting a recommendation to Cabinet on opening of schools. Target date to open schools is Monday, September 5 2022.
- Travel to the neighboring islands by sea or air will be restricted at this time until further notice; except for inter-island travel of passengers :

- Majuro, Kwajalein, Wotje, Aur, Jaluit, Mili, Ailinglaplap, Arno, Maloelap, Ailuk, Ebon and Mejit

*Cargo will be permitted with request and approval by National Disaster Committee

The National Disaster Committee continues to recommend the public to continue to practice safe hand hygiene, coughing & sneezing etiquette, physical distancing and frequent cleaning of surfaces.

- **Repatriation Working Group:**

Repatriation Program has closed. Here is a list of tranches that successfully entered the RMI:

- Tranche 1: Released on Nov 28 2020 with 27 individuals
- Tranche 2: Released on February 6 2021 with 40 individuals
- Tranche 3: Release on March 6 2021 with 43 individuals
- Tranche 4: Released on March 31 2021 with 51 individuals
- Tranche 5: Released on April 28 2021 with 76 Individuals
- Tranche 6: GroupA: Released on May 27 2021 with 53 individuals
GroupB: Released on June 9 2021 with 10 individuals
- Tranche 7: Released on June 22 2021 with 81 individuals
- Tranche 8: Released on July 21 2021 with 39 individuals
- Tranche 9: Released on August 11 2021 with 61 individuals
- Tranche 10: Released on September 2 2021 with 59 individuals
- Tranche 11: Released on September 22 2021 with 64 individuals
- Tranche 12: Released on October 20 2021 with 70 individuals
- Tranche 13: Released on December 01 & 08 2021 with 88 individuals
- Tranche 14: Released on December 28 2021 with 75 individuals

Break down Repatriation Efforts: 868 Marshallese Citizens have been repatriated overall.

- 757 individuals have been released from quarantine since the inaugural RMI repatriation from Honolulu HI
- 9 from Kosrae, FSM
- 2 from Pohnpei, FSM
- 13 via USAG-KA ATIs
- 23 from Kiribati
- 2 from Nauru
- 2 from Palau
- 48 essential workers from Fiji.
- 32 essential workers from Fiji

- **Safe Travels Program**

Although there is currently community transmission of COVID-19, The RMI's borders remain closed until January 13 2022. Thus, the RMI Safe Travel Program will post month registration links on

<https://ndmo.gov.mh/rmi-safe-travels-program/> .

			540 individuals
STP1A	18 individuals	STP1AA	23 individuals
Enter Phase 1	Monday, 10 January 2022	Enter Phase 1	Monday, 10 January 2022
Exit Phase 1	Monday, 17 January 2022	Exit Phase 1	Monday, 24 January 2022
Enter Phase 2 RMI	Tuesday, 18 January 2022	Enter Phase 2 RMI	Tuesday, 25 January 2022
Exit Phase 2 RMI	Tuesday, 1 February 2022	Exit Phase 2 RMI	Tuesday, 8 February 2022
STP1B	17 individuals	STP1C	24 individuals
Enter Phase 1	Wednesday, 19 January 2022	Enter Phase 1	Monday, 17 January 2022
Exit Phase 1	Wednesday, 26 January 2022	Exit Phase 1	Monday, 31 January 2022
Enter Phase 2 RMI	Thursday, 27 January 2022	Enter Phase 2 RMI	Tuesday, 1 February 2022
Exit Phase 2 RMI	Thursday, 10 February 2022	Exit Phase 2 RMI	Tuesday, 15 February 2022
STP2A	48 individuals	STP2B	61 individuals
Enter Phase 1	Monday, 7 February 2022	Enter Phase 1	Monday, 21 February 2022
Exit Phase 1	Monday, 14 February 2022	Exit Phase 1	Monday, 28 February 2022
Enter Phase 2	Tuesday, 15 February 2022	Enter Phase 2	Tuesday, 1 March 2022
Exit Phase 2	Tuesday, 1 March 2022	Exit Phase 2	Tuesday, 15 March 2022
STP3A	46 individuals	STP3B	24 individuals
Enter Phase 1 (HST)	Friday, March 11, 2022	Enter Phase 1 (HST)	Friday, March 18, 2022
Exit Phase 1 (HST)	Monday, March 14, 2022	Exit Phase 1 (HST)	Monday, March 21, 2022
Enter Phase 2 (RMI)	Tuesday, March 15, 2022	Enter Phase 2 (RMI)	Tuesday, March 22, 2022
Exit Phase 2 (RMI)	Tuesday, March 29, 2022	Exit Phase 2 (RMI)	Tuesday, April 5, 2022
STP4A	64 individuals	STP4B	65 individuals
Enter Phase 1 (HST)	Friday, April 8, 2022	Enter Phase 1 (HST)	Friday, April 29, 2022
Exit Phase 1 (HST)	Monday, April 11, 2022	Exit Phase 1 (HST)	Monday, May 2, 2022
Enter Phase 2 (RMI)	Tuesday, April 12, 2022	Enter Phase 2 (RMI)	Tuesday, May 3, 2022
Exit Phase 2 (RMI)	Tuesday, April 26, 2022	Exit Phase 2 (RMI)	Tuesday, May 17, 2022

STP5	53 individuals		
Enter Phase 1 (HST)	Friday, May 27, 2022		
Exit Phase 1 (HST)	Monday, May 30, 2022		
Enter Phase 2 (RMI)	Tuesday, May 31, 2022		
Exit Phase 2 (RMI)	Tuesday, June 14, 2022		
STP6	73 Individuals		
Phase 1	NO PHASE 1		
Depart HNL Airport (HST)	Monday, July 18, 2022		
Begin RMI Quarantine (RMI)	Tuesday, July 19, 2022		
Exit RMI Quarantine (RMI)	Monday, August 1, 2022		
STP7-KWAJ	49 Individuals	STP7-MAJ	48 Individuals
Depart HNL Airport (HST)	Wednesday, July 27, 2022	Depart HNL Airport (HST)	Thursday, July 28, 2022
Begin RMI Quarantine (RMI)	Thursday, July 28, 2022	Begin RMI Quarantine (RMI)	Friday, July 29, 2022
Exit RMI Quarantine (RMI)	Sunday, August 7, 2022	Exit RMI Quarantine (RMI)	Monday, August 8, 2022

- **Pandemic Unemployment Assistance:**

According to the RMI's Labor Division: No new updates since 7th August 2022)

Claimants Applied: 600

Approved: 467

Total Amount Awarded: PUA: 4,474,960.00 ~ FPUC: 5,484,000.00

Disbursed: PUA: 3,443,423.83 ~ FPUC: 3,750,333.95

Remaining Balance: PUA: 1,031,536.17 ~ FPUC: 1,733,666.05

Since the start of the pandemic, many of RMI's work force felt the impacts of COVID19 in their workplace, including hourly wages being cuts as well as lay-offs especially in RMI's tourism sector and other major areas such as the fisheries observers. Such employees include those from MIMRA, United Airlines, and Pan Pacific Foods. The PUA was designed to grant assistance to these types of economic impacts and is currently accepting applications. Employees from the RMI Labor Division, Ministry of Finance Banking and Postal Services, and RMI Attorney General's Office were trained virtually with US Department of Labor in preparation to run the PUA Office in the RMI.

- **Economic IA Covid Committee**

The PCERP Board has reviewed and analyzed the applications, tax filings, financial statements along with supporting documents for each business to determine the level of impacts and the appropriate relief assistance.

The program's intentions are aimed at assisting businesses mitigate COVID-19 impacts by reducing their expenses, utilizing cost-saving measures in order to improve their financial resiliency and reduce the burden on the government.

- The beginning balance was \$6 million appropriated with the total expenditure of \$5.8 million accounted for 347 approved businesses received assistance. A total of 29 payouts applications deployed. The remaining balance stands at \$154,102.
- There are some unfinished businesses i.e Ebeye Hotel/Ebeye Stevedore, Ebeye businesses and others/handicrafts, anticipated total of \$175,000 (If necessary, committee will request addition fund)
- Ebeye Taxi Driver is yet to be distributed. The committee will meet shortly to discuss this and other matters. There are several transferred out of funds to various agencies to NEOC, MOHHS COVID raffle and REPO to NDC for repat.
- August 19 2022, approval for payout to 4 local businesses totaled \$52,262.44.

Way forward:

- Outer islands to provide assistance
- Handicraft organizations in Majuro
- FIBL

- **Government Distribution of COVID-19 Home Care Kits:**

On Saturday, August 13 2022, under the management of OCS NDMO, a team consisting mainly of volunteers started assembling the home care packages that will be distributed to households in Majuro, Kwajalein and neighboring islands, especially those with confirmed cases. In partnership with MALGOV and Iroj Yolán Jurelang (as contact point for Alabs on Majuro), the first 900 boxes were able to make their way to Majuro communities initially.

The home care package contents were donations from within RMI and abroad, including ROC Taiwan, UNICEF, various Marshallese Communities abroad and RMI Missions. Contents include masks, hand sanitizers and hand soaps to help the community cope with the COVID-19 outbreak.

Over the past weekend the team grew with more and more volunteers coming into the International Conference Center in Delap (ICC) to lend a helping hand from time to time. Volunteers have included Miss Ingrid Kabua, who took some time to lead the operations, representatives from Nito Butterfly Foundation, COOPS's MadDogs, Majuro Senator Steven Phillip, EPA, WUTMI, MalGov, MOHHS and various individuals.

The Office of the Chief Secretary takes this time to thank all those who have helped in this operation since the start. This is a very big operation and those who wish to volunteer their time can go to ICC between 10am and 5pm during week days.

Home care packages have been delivered to: Majuro, Ailuk , Kwajalain, Wotje, Aur, Arno, Ailinglaplap, Jaluit, Maloelap, Mili, Utrik, Mejit, and soon to Ebon.

National Emergency Operations Center Cluster Updates:

- Partial activation of NEOC to support HEOC and coordinate humanitarian assistance
- NEOC Cluster Leads met on August 10th to discuss updates on preparedness and response activities and coordinate resource allocation and information management
- Ministry of Foreign Affairs and Trade convened a Donors Roundtable Meeting on 8th August to discuss coordination of international assistance
- Support to Alternate Care Site in place by NEOC members
- Suspension of physical attendance of classes in all schools in the country
- No institutionalised quarantine for arriving passengers in both Majuro and Kwajalein. Test in country and 5 day home quarantine in place.
- Main hospitals in Majuro and Ebeye only open to emergency cases via triaging process
- Restriction of travel to outer islands except for 9 atolls with community transmission of covid-19, however international ports remain operational
- Earliest overseas medical assistance teams from the Centre for Disease Control in the US and other countries have begun arriving in the RMI.

SUMMARY CLUSTER ACTIVITIES

HEALTH CLUSTER

• Response To Date	• Response Needs	• Cost
<ul style="list-style-type: none"> • 2 x Alternate Care Sites set-up at Marshall Islands High School & Delap Elementary School (operating daily till 2000hrs) 	<ul style="list-style-type: none"> • Volunteers and volunteer coordinators (MIRC requested to support) • Information management • Logisticians at each ACSs (4 sites) • Traffic control at ACSs • Signages • Transportation • PPE restocking for frontline workers • Furniture (table & chairs) for ACSs • Replenishment of supplies for Ebeye response • Fuel and catering for MOHHS frontline staff • Procurement of Community Home Care Package 	<ul style="list-style-type: none"> • •
<ul style="list-style-type: none"> • MOHHS personnel operating Alternative Care Sites as well as setting up others in Long Island locations 		
<ul style="list-style-type: none"> • Test to treat services at ACS and at arrival ports 		
<ul style="list-style-type: none"> • Hospitals in Majuro and Ebeye remain operational for emergency referrals 		

LOGISTICS CLUSTER

• Response To Date	• Response Needs	• Cost
<ul style="list-style-type: none"> 08/09 /22 - set up tent/table/chair at test site, take needed items from Do it Best (on stand by for anything) 	<ul style="list-style-type: none"> TBC 	<ul style="list-style-type: none">
<ul style="list-style-type: none"> 08/10/22 - received, delivered items from Ace Hardware to MOHHS container yard, helped out in any way (on stand by for anything) 		
<ul style="list-style-type: none"> LOGs have already informed both Air (AMI) & Sea (MISC) on the procedures in sending essential goods and foods to the Neighboring Islands and Ebeye that they must go to NDMO office. 		
<ul style="list-style-type: none"> MV Eniko – arrived this morning 9am at Uliga port with students, passengers, and teachers which they are still on the ship waiting further instruction. Foods and cargos still on board except passenger’s personnel belonging 		
<ul style="list-style-type: none"> Logs offices at Uliga will continue be open and on standby 24/7 	<ul style="list-style-type: none"> 	<ul style="list-style-type: none">

INFRASTRUCTURE CLUSTER

• Response To Date	• Response Needs	•
<ul style="list-style-type: none"> Installation of Condition RED level flags 	<ul style="list-style-type: none"> TBC 	<ul style="list-style-type: none">
<ul style="list-style-type: none"> Deployment of diesel trucks & crew 		
<ul style="list-style-type: none"> Installation for signages at operating Alternate Care Sites 		
<ul style="list-style-type: none"> On standby to provide the following support; <ul style="list-style-type: none"> - Tents (2) - Diesel Trucks (2) - Outdoor spotlight (1) 		

-On going Infrastructure Cluster COVID-19 progress since February 2020:

Task/Activity	Action	Target Completion	Cost/Account	Status
1	Majuro Construction of 8-Room COVID-19 Isolation Ward Facility (2,557 sqft)	04/04/20	\$670,273.00 (GG1127)	• COMPLETED
2	Construction of COVID-19 Laboratory (420 sqft) including change orders	04/04/20	\$292,038.00 (ELC/GG1127)	• COMPLETED
3	Change order for Isolation and Laboratory			Additional works completed in addition to the contract as follows; a.) Intercom each patient room (device and wiring) b.) Telephone line at Nurse station c.) Additional Cabinets and Shelves at Laboratory and Isolation c.) Fire Alarm System d) Ramp Railings & Fencing
<p><u>Completion Schedule: Project Substantially Completed last April 30, 2020, additional HEPA Negative Pressure Vent Units installed and completed including Perimeter Fencer for both Isolation Ward and PCR Laboratory completed last August 18, 2020.</u></p> <p><u>❖ Project handedover last August 21, 2020 (Friday).</u></p>				
Task/Activity	Action	Target Completion	Cost/Account	Status
4	Medical Equipment for Item 1 COVID-19 Isolation Ward	04/04/20	\$375,978.00 (Grant by MoHHS)	Purchase Orders approved but vendors notified MoHHS of shortage of supplies due COVID situation from various sources Note: Additional two (2) HEPA Negative Pressure Vent Units from Taiwan delivered and received last August 11, 2020.
	Ebeye, Kwajalein			
5	Construction of 6-Room COVID-19 Isolation Ward Facility (2,580 sqft)		\$750,000.00 (CHC)	• COMPLETED • Original Completion Date: 8 th July 2020 • Delayed: Actual Completion January 21, 2020

Task /Activity	Action	Target Completion	Cost/Account	Status/Remarks
6	Additional PCR Laboratory	12/20/20	\$212,777.00 (ELC)	<ul style="list-style-type: none"> • COMPLETED • Original Completion: Jan 2021 • Revised Completion: June 2021
7	Quarantine Facility (Guggegue Site)	07/08/20	\$236,929.00 (FK1131)	<ul style="list-style-type: none"> ☐ COMPLETED ☐ Original Completion Date: 8th July 2020 ☐ Completed August 28, 2020 ☐ Balance: Perimeter Fence completed last March 22, 2021
	OTHERS:			
	Majuro & Ebeye Hospitals			
8	Other than medical equipment such as hospital beds, tables, chairs, furniture, window blinds and other building consumables (hand sanitizers, paper towel and dispensers, cleaning equipment, trash bins, PPEs)		Costing by MoHHS	To be purchased by MoHHS
9	Shower Room Project at AKIA VIP Lounge	05/18/20	\$26,088.00 (Funded by IOM)	<ul style="list-style-type: none"> ☐ COMPLETED ☐ Handed over last May 18, 2020
10	Proposed Majuro Hospital Maternity and Labor Ward Extension for COVID-19 Patients	TBA	\$160,000.00 (FK1129): Lowest Bid \$383k	Bids received last July 31, 2020 Funding source to be identified
11	Proposed Majuro Hospital Fencing Repair Works	12/08/20	\$137,000.00 (Contract)	<ul style="list-style-type: none"> • COMPLETED Original Completion: Dec 8 2020 Actual Completion Date: Feb 2021
12	Proposed Majuro Hospital Warehouse	04/07/21	\$686,000.00 (FK1129)	96% completed Works ongoing Original Completion: Apr 7 2021 Delayed: Due to delivery of Electrical Panels (arrival date June '22)

13	Neighboring Islands Shelters, Health Center Storage expansion	TBA	\$1.641m (Budgeted)	On-hold pending availability of funds Rapid assessments completed on the following: Arno, Ailinglaplap, Utrik, Jaluit Wotje, Maloelap and Likiep, Mili
14	Shelter Cluster related activities (Majuro) (Construction of Shower Room/Fences)	01/09/21	\$500,000.00 (FY21)	<ul style="list-style-type: none"> COMPLETED Original Completion Date: Jan 9, 2021 Revised Completion Date: May 2021

Task/Activity	Action	Target Completion	Cost/Account	Status
	OTHER PROJECTS:			
	Majuro & Ebeye Hospitals			
15	Proposed Majuro Hospital Maternity and Labor Ward Repairs	April 2021	\$89,713.00 (WB)	<ul style="list-style-type: none"> COMPLETED
16	Laura Health Center Extension (Laboratory and Public Health)	November 2021	\$149,952.55 (ELC\$150,000.00/)	<ul style="list-style-type: none"> 95% completed Delayed- completion date to be revised
17	Majuro Hospital Roof Repair	May 2021	\$65,000.00 \$65,000 ROC	<ul style="list-style-type: none"> COMPLETED
18	MCH Renovation and Medical Storage	TBA	TBD	<ul style="list-style-type: none"> For Bidding Jan 2022
19	Majuro Hospital Public Health Laboratory Storage Extension	November 2021	\$117,061.93 (ELC)	<ul style="list-style-type: none"> COMPLETED
20	Medical Ward C Repairs <i>Change Orders:</i>		\$58,000.00 (GG1128) \$98,737.00	<ul style="list-style-type: none"> COMPLETED Funding to be confirmed
21	Majuro Hospital Crisis Holding Unit	November 2021	\$189,520.00 (GG1125/ADB)	<ul style="list-style-type: none"> COMPLETED Revised completion: 03/22 Pending: (MEC/MWSC hook-up)
22	Ebeye Hospital Vaccination Facility	TBA	\$65,000.00 (RL3066 ROC)	<ul style="list-style-type: none"> Bid solicitation completed RFB documents for issuance 1st week August 2021 On-hold/Scope to be revised per MoHHS Ebeye

22	Ebeye Hospital TB Ward Toilet Repairs	July 2022	\$62,506.58 (GG1125/ADB)	<ul style="list-style-type: none"> • Delayed: Contract resubmitted due to lost files • Works-on going • 80% completed
23	Kwajalein Mid Corridor COVID-19 shelters (Enemat & Nel Islands)	October 2021	\$370,011.54 (ADB) \$242,321.41 (Variation)	<ul style="list-style-type: none"> • 74% completed • Delayed, completion date to be revised
24	Medical Containers Foundation donated by ROC (9 units x 40ft)	November 2021	\$216,609.00 (ROC)	<ul style="list-style-type: none"> • 95% completed • Pending (Arrak Site): final location (by MoHHS)
25	Youth to Youth Repairs for Vaccination Facility	May 2022	\$61,050.00 (RL3066 ROC)	<ul style="list-style-type: none"> • 100% completed • Need Additional Works
26	Arrak Quarantine Facility (Revised to 10 Rooms)	Phase 1- 07/22 Phase 2- 11/22	\$1.364M	<ul style="list-style-type: none"> • Phase 1 (Pre-fab)- for completion by end of July '22 • Phase 2 (New)- bids review on-going
27	RMI-PA FAA Quarantine Facility	September 2021	\$66,106.84	<ul style="list-style-type: none"> • COMPLETED
28	RMI-PA Control & Surveillance Tower	November 2021	\$123,654.04	<ul style="list-style-type: none"> • Works on-going • 100% completed



PHOTOS: (Majuro Hospital COVID-19 Laboratory)

Note: Above photos shows completed installations of HEPA Negative Pressure Vent Units, Pressure Gauges and Humidity Sensors, Bio-Safety Cabinets and recently installed Perimeter Fencing.



PHOTOS: (Aerial views of Ebeye Hospital 6-Room Surge Isolation construction)

Above photos shows the hand-over ceremony of the New Ebeye Hospital Isolation Building held last Jan. 21, 2021.



PHOTOS: (~~Gungzue~~ Quarantine Facility)

PROJECT SITE

Above photos shows the completed ~~Gungzue~~ Health Center and the recently installed/completed perimeter fence.



AIRPORT SHOWER ROOM PROJECT (by IOM)

PHOTOS: (OTHER NEW COVID RELATED PROJECTS)

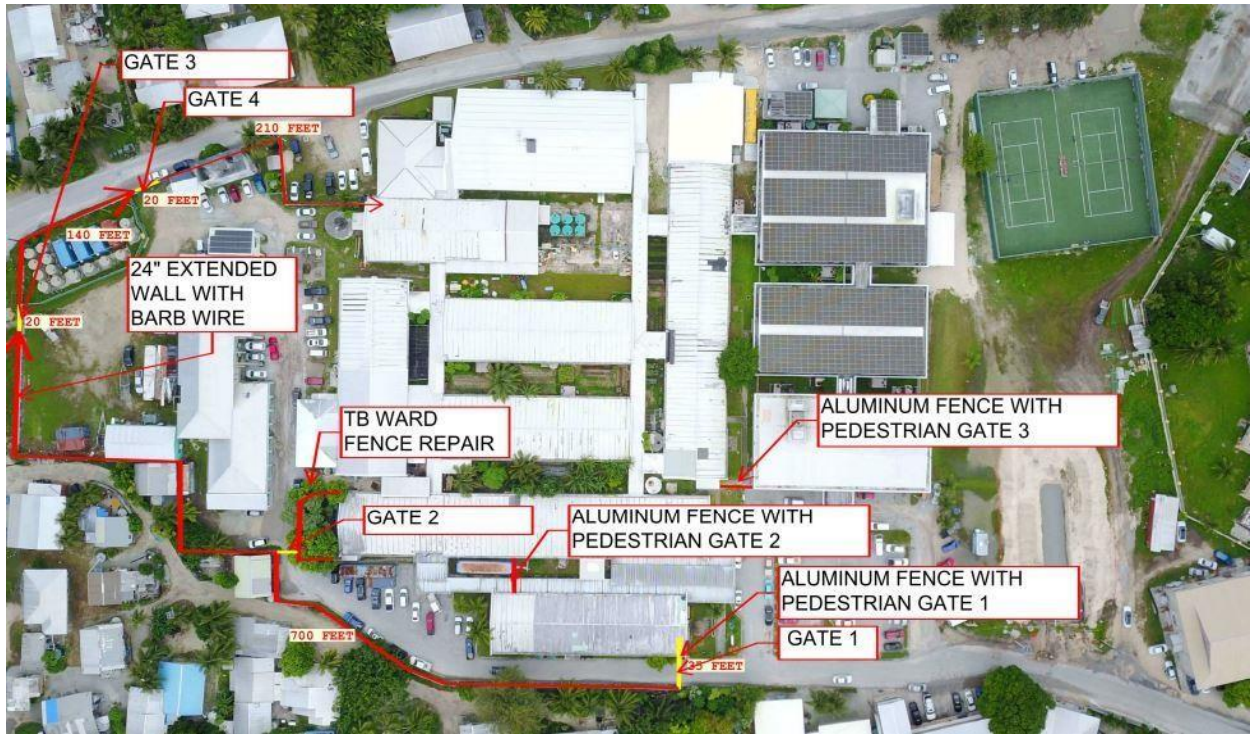


Architect's Perspective of New MOHHS Warehouse



Above photos showing completed exterior and interior paintings and finishing (left) and on- going installation of Electrical Panels

Electrical Panels delivered and completed (as of July 10, 2022)



Proposed Majuro Hospital Fencing Repairs Plan
(Completed Gate and Fencing Works at site)
Balance of Works- Painting of Fences (change order)



Youth to Youth Building Repair



Completed Ebeye PCR Lab Project (Ebeye, Kwajalein Atoll)



Delap Elementary School (Completed shower Rooms and Fence Project)

North Delap Elementary School (Completed Shower Rooms Project)

PHOTOS: (Completed Delap Elementary and North Delap Elementary Schools Shower Rooms and Fencing)

Projects are both completed and handedover to PSS



Completed Majuro Hospital Repair of Maternity and Labor Ward Repair



Majuro Hospital Crisis Holding Unit New Building (Completed except MEC/MWSC hook up from MEC/MWSC)



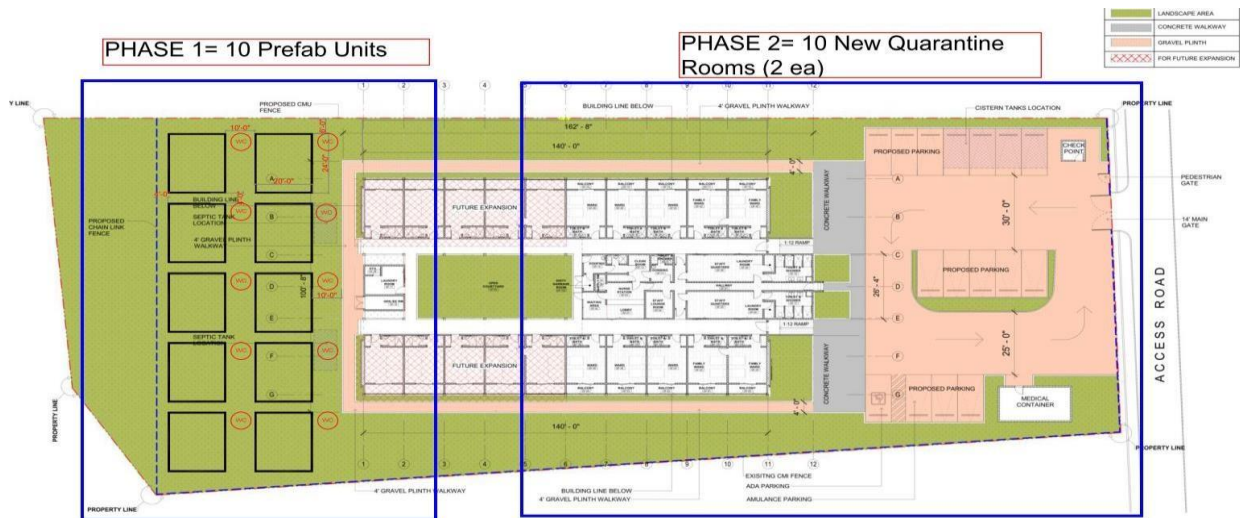
Ebeye Hospital

Majuro Hospital

**Medical Containers donated by ROC- Labor Works Contract (units on site)-
Majuro/Ebeye including Delap Dock and Airport completed,
Arrak location pending site confirmation by MoHHS**



Completed Majuro Hospital Laboratory Storage Expansion



SITE PLAN
SCALE: 1/8" = 1'-0"



Phase 1



Phase 2

PROPOSED SITE DEVT PLAN FOR ARRAK QUARANTINE FACILITY

(Rebidding)

- Package 1 (Prep for Pre-fab Containers)-Contract awarded. Mobilization revised to May 9, 2022 with completion date of July 2022)
- Package 2 (bid for New 10 Rooms Arrak Quarantine Facility on-going, bid submission revised to June 28, 2022)- Bids review on-going



Completed Quarantine Lounge at Amata Kabua International Airport- For Final Inspection



RMI-PA Control and Surveillance Tower (Delap Dock)- project delayed/works on-going and resumed Jan 3, 2022. Revised schedule and completion date to be resubmitted by the Contractor



Laura Health Center Repairs and Extension



Enemat Island (Photos not updated)



Nel Island (photos not updated)

No Update on Eru Island

Kwajalein Mid-Corridor Shelters On-going construction



Ebeye Hospital TB Trailer Retrofitting

WASH CLUSTER

Since the outbreak on 8 August 2022, the WAS cluster has implemented the following response activities:

Activity	When it was implemented?	Responsible
Decontamination at Alternative Care Sites	August 9, 2022	EPA
Waste Management at ACS	August 13, 2022	Majuro Atoll Waste Company but will responsibility will be contracted out to private company.
Preparation of jerry cans for WASH kits	August 22, 2022	IOM
Preparation of buckets and 3-gallons bottles	August 25, 2022 **To be distributed to community buildings and prioritize HHs with disabilities.	IOM, EPA, MIRCS.

WASH resources currently in stock:

Item	QTY
Human Resources	20
Clorox	6 cases
PPEs	4 cases
Face shield	2 cases
Alcohol	2 cases
Gloves	12 box
Masks	12 box
Jerry cans for WASH kits	2,782

WASH Gaps and Challenges:

- Availability of vehicles and human resources for decontamination activities.
- Closure of school gates for rubbish pickups. No one at site to open gates.
- Availability of materials for WASH kits to neighboring atolls.

GENDER AND PROTECTION CLUSTER

• Response To Date	• Response Needs	• Cost
<ul style="list-style-type: none"> Starting interviews with mothers of the cash transfer for ECD Project Include sign language translator in the interview All staff should get tested and follow MOHHS precautions measure Cluster members should adhere with the Cluster TOR and SOP 	<ul style="list-style-type: none"> Tents, chairs – for outside of office to conduct interviews Masks Gloves Water Human Resources 	<ul style="list-style-type: none">

OPERATIONAL PRIORITIES

- Coordination of international assistance for replenishing depleted MOHHS covid treatment and response supplies
- Mobilization of volunteers to support operation staff at all Alternative Care Sites
- Equipping of Alternative Care Centres (4 sites) with proper equipment including desk and chairs, crowd informational and control means such as signages and barricade
- Coordinate support for deaf interpreters to be available at Alternative Care Sites and triaging points
- Maintain seamless test to treat functions at Alternate Care Sites for detection and early referral of most vulnerable cases
- Fiji Airways flight (ETA 081/12/22) readiness for test to treat on arrival

Support from Development Partners:

GRMI remains deeply grateful to its development partners for their assistance and support in the RMI's national COVID-19 preparedness activities - the United States, ROC Taiwan, Australia, New Zealand, Japan, UAE, Israel, India, ADB, the World Bank, EU, IAEA, IFRC, PIHOA, and the UN, namely UNFPA, UNICEF, CDC, WHO, FSM, American Samoa, & IOM.

Coordination is conducted in the National Emergency Operations Center (EOC) through the Chief Secretary's Office, who is Chair of the National Disaster Committee. National agencies coordinate their efforts through the activated clusters (WASH, Logistics, Food Security, Health, Gender and Protection, Shelter/Education Cluster, and Infrastructure Cluster).

For further information, please contact: NDMO:+692 625 5150/5236; Mobile: +692 455-3851. Information Management Officer, NDMO: Yetta Aliven, NDMOinfo@gmail.com Tel:

+692 625 6366; Mobil: +692-455-0161. RMI NDMO Website: www.ndmo.gov.mh; Andrea Muller; Assistant Secretary Multilateral Affairs, Ministry of Foreign Affairs and Trade Tel: +625 625 3181/3012; kuuj.muller@gmail.com. RMI NDMO Website: www.ndmo.gov.mh